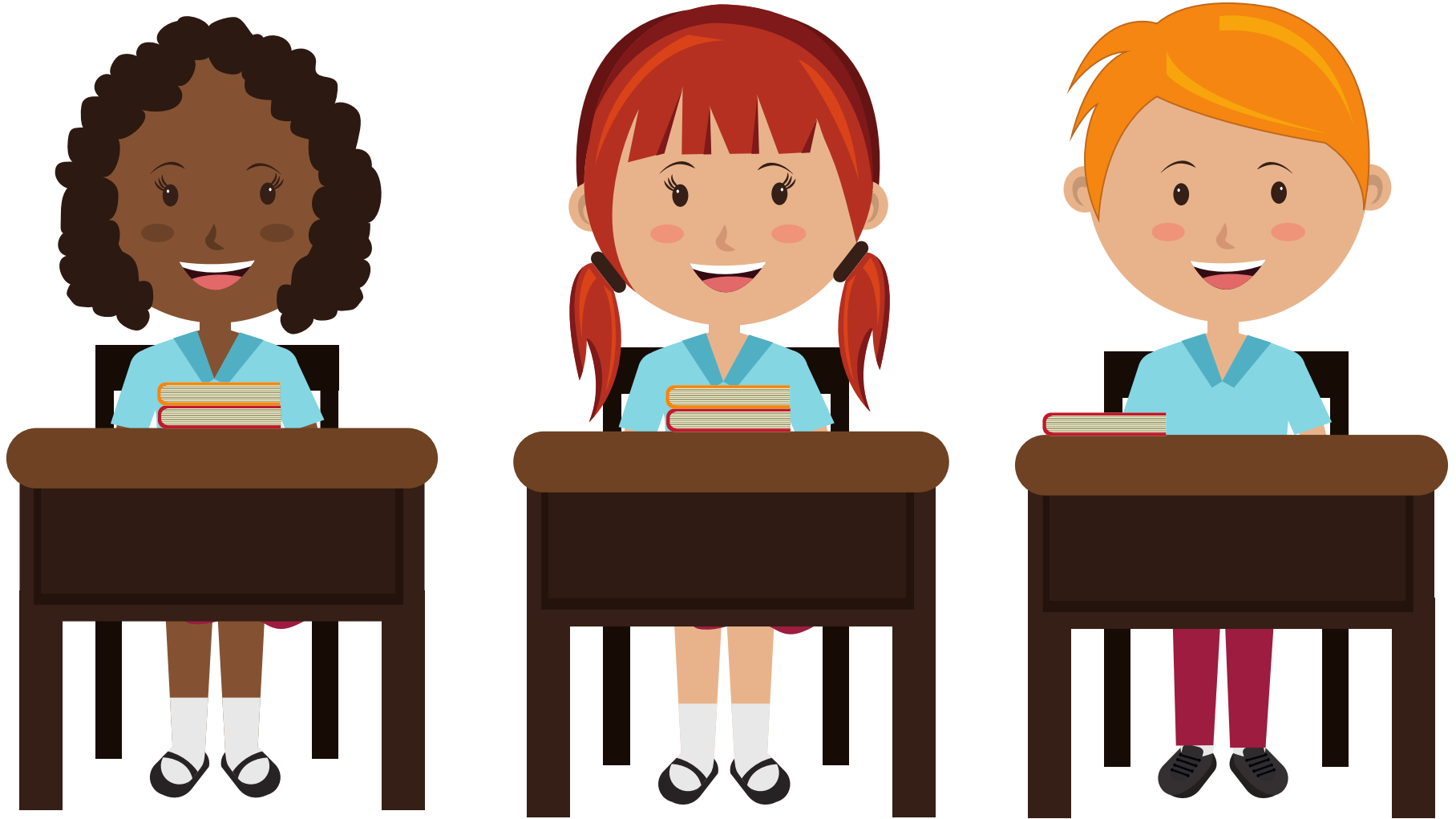


Rounding for Seats

An Activity to Assign Seats and Practice Rounding



1st Grading Period

Round to the Nearest Whole Number

Directions:

1. Cut out the Cards below
2. Give Each Student a Card
 - Numbers that Rounds to 1 will Sit in the First Row
 - Numbers that Rounds to 2 will Sit in the Second Row
 - Numbers that Rounds to 3 will Sit in the Third Row
 - Numbers that Rounds to 4 will Sit in the Fourth Row
 - Numbers that Rounds to 5 will Sit in the Fifth Row
3. After they find their Row or Group they will sit in the desks in order by value. Highest Number in the First Seat and the Lowest Number in the Last Seat.

Whole Number

.973

Whole Number

1.54

Whole Number

3.3

Whole Number

4.125

Whole Number

5.01

Whole Number

.5

Whole Number

1.9

Whole Number

2.5

Whole Number

4.4

Whole Number

5.11

Whole Number

.678

Whole Number

2.3

Whole Number

2.999

Whole Number

3.542

Whole Number

5.4

Whole Number

1.123

Whole Number

2.09

Whole Number

3.4

Whole Number

3.999

Whole Number

4.999

Whole Number

1.4

Whole Number

2.44

Whole Number

3.39

Whole Number

4.35

Whole Number

4.5

2nd Grading Period

Round to the Nearest Tens Place

Directions:

1. Cut out the Cards below
2. Give Each Student a Card
 - Numbers that Rounds to 10 will Sit in the First Row
 - Numbers that Rounds to 20 will Sit in the Second Row
 - Numbers that Rounds to 30 will Sit in the Third Row
 - Numbers that Rounds to 40 will Sit in the Fourth Row
 - Numbers that Rounds to 50 will Sit in the Fifth Row
3. After they find their Row or Group they will sit in the desks in order by value. Highest Number in the First Seat and the Lowest Number in the Last Seat.

Tens

10.4

Tens

15

Tens

34

Tens

44.4

Tens

45.5

Tens

14.4

Tens

15.5

Tens

33.3

Tens

41

Tens

54

Tens

12

Tens

24.1

Tens

25

Tens

43.9

Tens

48.2

Tens

5

Tens

22

Tens

26

Tens

35

Tens

46

Tens

5.5

Tens

19

Tens

25.4

Tens

35.1

Tens

49.9

3rd Grading Period

Round to the Nearest Tenths Place

Directions:

1. Cut out the Cards below
2. Give Each Student a Card
 - Numbers that Rounds to $.1$ will Sit in the First Row
 - Numbers that Rounds to $.2$ will Sit in the Second Row
 - Numbers that Rounds to $.3$ will Sit in the Third Row
 - Numbers that Rounds to $.4$ will Sit in the Fourth Row
 - Numbers that Rounds to $.5$ will Sit in the Fifth Row
3. After they find their Row or Group they will sit in the desks in order by value. Highest Number in the First Seat and the Lowest Number in the Last Seat.

Tenths

.123

Tenths

.234

Tenths

.321

Tenths

.432

Tenths

.543

Tenths

.059

Tenths

.15

Tenths

.25

Tenths

.35

Tenths

.45

Tenths

.05

Tenths

.198

Tenths

.29

Tenths

.39

Tenths

.49

Tenths

.1

Tenths

.201

Tenths

.301

Tenths

.401

Tenths

.501

Tenths

.09

Tenths

.209

Tenths

.309

Tenths

.409

Tenths

.509

4th Grading Period

Round to the Nearest Tenths Place

Directions:

1. Cut out the Cards below
2. Give Each Student a Card
 - Numbers that Rounds to $.11$ will Sit in the First Row
 - Numbers that Rounds to $.12$ will Sit in the Second Row
 - Numbers that Rounds to $.13$ will Sit in the Third Row
 - Numbers that Rounds to $.14$ will Sit in the Fourth Row
 - Numbers that Rounds to $.15$ will Sit in the Fifth Row
3. After they find their Row or Group they will sit in the desks in order by value. Highest Number in the First Seat and the Lowest Number in the Last Seat.

Hundredths

.111

Hundredths

.122

Hundredths

.133

Hundredths

.144

Hundredths

.154

Hundredths

.114

Hundredths

.124

Hundredths

.134

Hundredths

.143

Hundredths

.153

Hundredths

.1101

Hundredths

.115

Hundredths

.125

Hundredths

.135

Hundredths

.145

Hundredths

.109

Hundredths

.119

Hundredths

.129

Hundredths

.139

Hundredths

.149

Hundredths

.105

Hundredths

.116

Hundredths

.126

Hundredths

.136

Hundredths

.146