

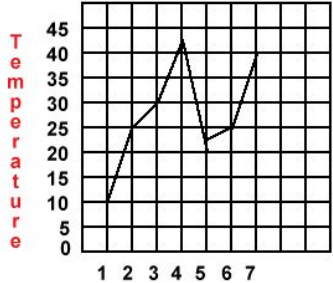
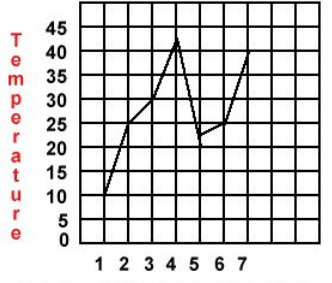
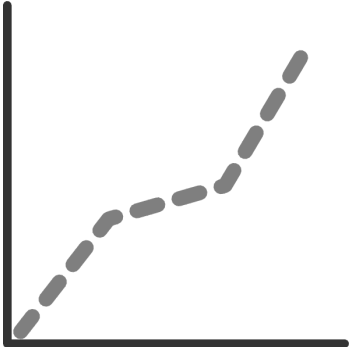
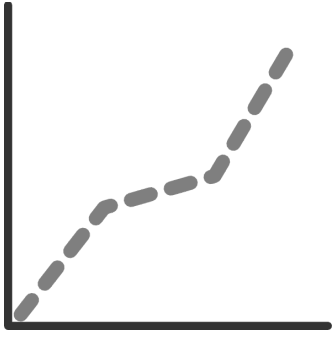


Describe and Sketch Qualitative Features of a Graph

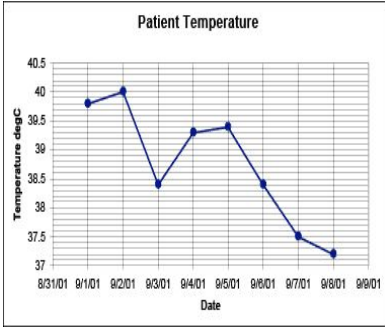
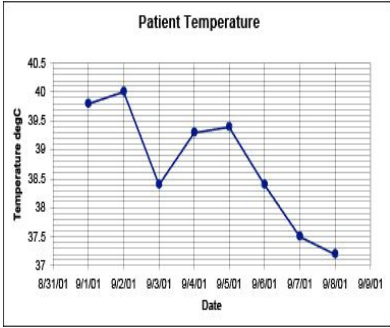
Show it, Say it, Sketch It, Match it

CARDS

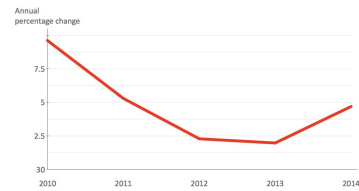
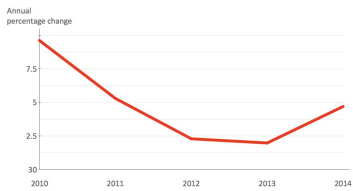
Note to designer - draw similar graphs to those below.

These were found on clipart-library .com or modeled with google drawings

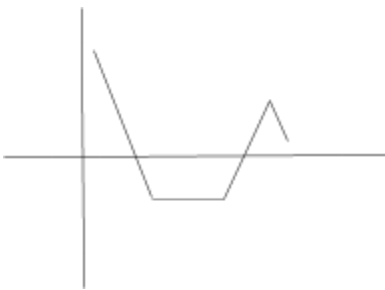
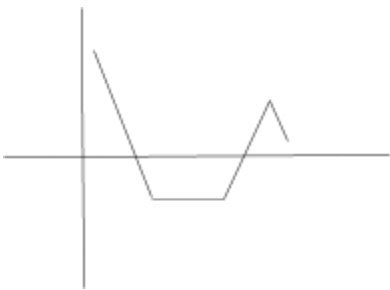
GRAPH Cards for ACTOR	Graph to Match	Description to Match
 <p data-bbox="212 888 542 930">Average Daily Temperature for January 1-7 in Degrees Fahrenheit</p>	 <p data-bbox="625 888 954 930">Average Daily Temperature for January 1-7 in Degrees Fahrenheit</p>	<p data-bbox="1027 583 1412 898">Temperature increased quickly the first day, then continued to increase until a maximum of 40. After hitting a max of 40, the temperature decreased quickly, increased slightly and then almost got back up to the maximum.</p>
		<p data-bbox="1027 989 1403 1234">The graph starts at zero and continues to only increase. It increased fast, then the increase slowed slightly. In the middle, the line is not as steep. Then it increased faster at the end.</p>
		<p data-bbox="1027 1375 1403 1549">This graph starts out increasing, then drops and decreases below the original value to reach a minimum before increasing again.</p>



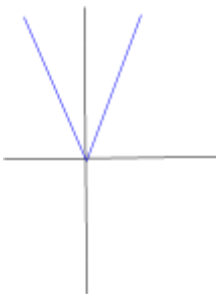
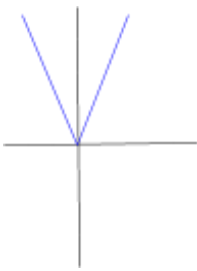
This graph starts at a high temperature and increases slightly to the maximum before decreasing or dropping rapidly. It then turns up and increases again. It reaches a peak, but does not get as high as the maximum before turning and decreasing again. It continues to decrease.



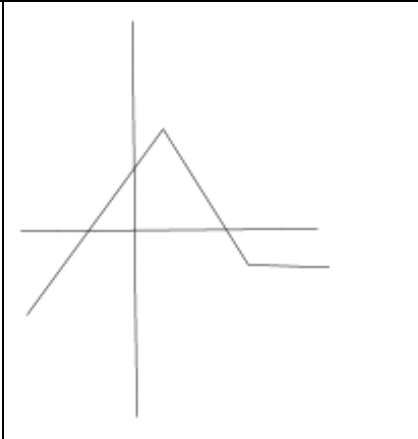
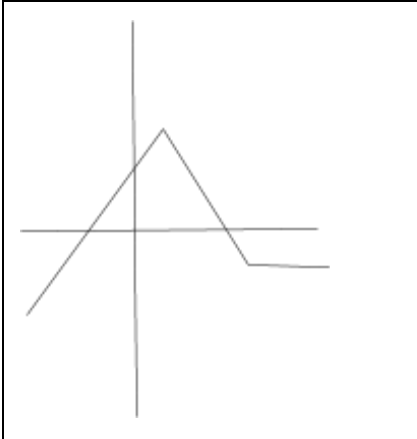
This graph starts high and decreases steadily. It starts to level off, but continues to decrease to the minimum and then starts to increase.



This graph starts high and decreases rapidly, it hits a minimum and then goes flat or constant for a while. Then it starts to increase back up, but turns and decreases again.



This graph starts high, decreases to a minimum of zero and then increases back up at the same rate.



This graph starts low and increases at a steady rate. It reaches a maximum and decreases back down until it stops and remains constant